

2009_SBwZ_1liga_BNC_Bratislava_jar 2010



Oil Per Board: **50 uL** Oil Pattern Distance: **39 Feet** Volume Oil Total: **21.2 mL** Total Boards Crossed: **424 Boards**

Forward Oil Total: **12.3 mL** Reverse Oil Total: **8.9 mL**
 Forward Boards Crossed: **246 Boards** Reverse Boards Crossed: **178 Boards**

	Start	Stop	Loads	Speed	Crossed	Start	End	Feet	T.Oil
1	2L	2R	3	14	111	0.0	3.9	3.9	5,550
2	9L	9R	1	14	23	3.9	5.8	1.9	1150
3	10L	10R	2	14	42	5.8	9.7	3.9	2100
4	11L	11R	2	14	38	9.7	13.6	3.9	1900
5	12L	12R	1	26	17	13.6	17.2	3.6	850
6	13L	13R	1	26	15	17.2	20.8	3.6	750
7	2L	2R	0	26	0	20.8	39.0	18.2	0

Navigation: Forward / Reverse / More Info

	Start	Stop	Loads	Speed	Crossed	Start	End	Feet	T.Oil
1	2L	2R	0	26	0	39.0	33.0	-6.0	0
2	13L	13R	3	18	45	33.0	25.4	-7.6	2250
3	12L	12R	2	18	34	25.4	20.3	-5.1	1700
4	11L	11R	3	18	57	20.3	12.7	-7.6	2850
5	10L	10R	2	18	42	12.7	7.6	-5.1	2100
6	2L	2R	0	14	0	7.6	0.0	-7.6	0

Navigation: Forward / Reverse / More Info

Report Date

1/6/2010

Conditioner:
Prodigy

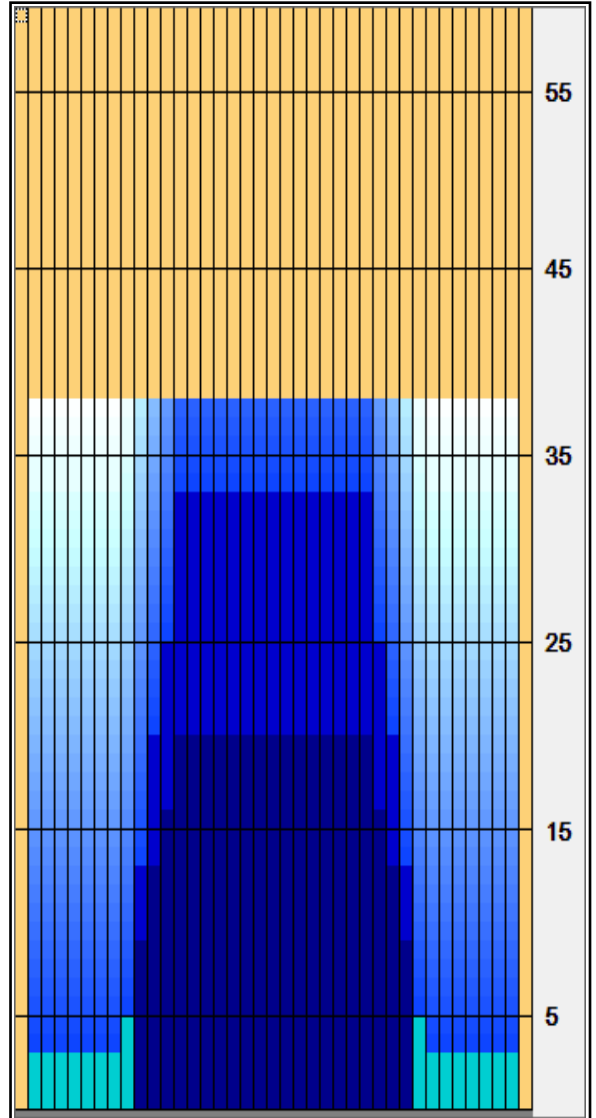
TransferType:
Transfer Brush

Forward Oil

Reverse Oil

Combined Oil

Buff Area



Arrow Zone Ratios

Item	2-5L:16L-20	6-10L:16:-20	11-15L:16L-20	16L-20:20-16R	16L-20:20-16R	20-16R:15-11R	20-16R:10-6R	20-16R:5-2R
ul Arrow	150	210	890	1000	1000	890	210	150
Zone Ratio	6.67	4.76	1.12	1	1	1.12	4.76	6.67

Track Zone Ratios

Item	3L-7L:18L-18R	8L-12L:18L-18R	13L-17L:18L-18R	18L-18R:17R-13R	18L-18R:12R-8R	18L-18R:7R-3R
Description	Outside Track:Middle	Middle Track:Middle	Inside Track:Middle	Middle: Inside Track	Middle:Middle Track	Middle:Outside Track
Track Zone Ratio	6.67	2.27	1	1	2.27	6.67

