

2020 PBA HOLMAN 37



Oil Pattern Distance: 37 Feet **Reverse Brush Drop:** 37 Feet **Oil Per Board:** 50 uL
Forward Oil Total: 17.8 mL **Reverse Oil Total:** 10.25 mL **Volume Oil Total:** 28.05 mL
Forward Boards Crossed: 356 Boards **Reverse Boards Crossed:** 205 Boards **Total Boards Crossed:** 561 Boards

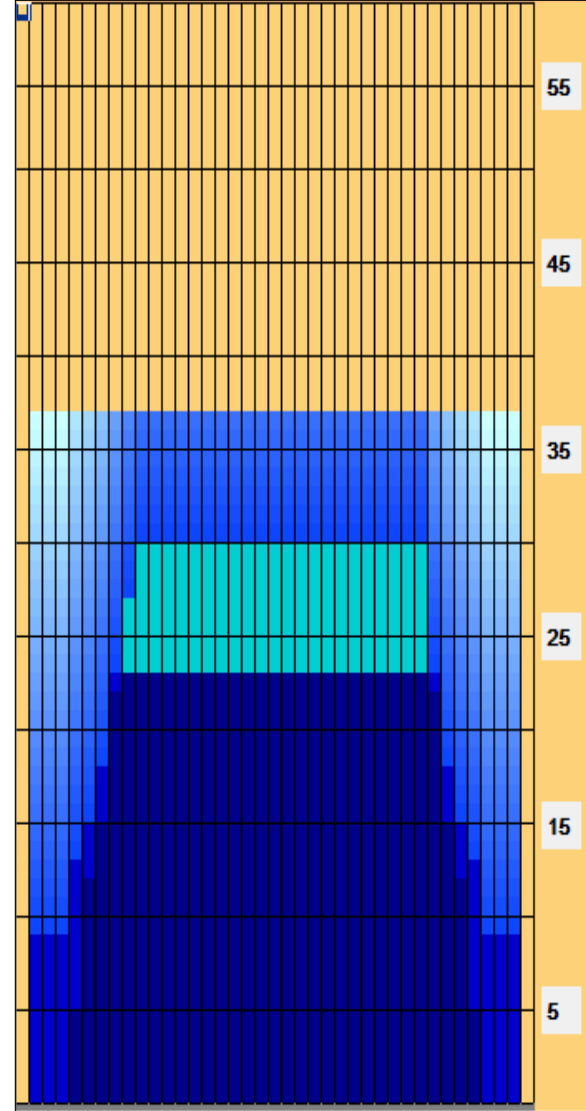
	Start	Stop	Loads	Speed	Crossed	Start	End	Feet	T.Oil
1	2L	2R	1	14	37	0.0	0.0	0.0	1850
2	5L	5R	2	18	62	0.0	5.1	5.1	3100
3	6L	6R	3	18	87	5.1	12.7	7.6	4350
4	7L	7R	1	18	27	12.7	15.2	2.5	1350
5	8L	8R	3	18	75	15.2	22.8	7.6	3750
6	9L	9R	2	18	46	22.8	27.9	5.1	2300
7	10L	9R	1	18	22	27.9	30.4	2.5	1100
8	2L	2R	0	22	0	30.4	37.0	6.6	0

	Start	Stop	Loads	Speed	Crossed	Start	End	Feet	T.Oil
1	2L	2R	0	22	0	37.0	23.0	-14.0	0
2	8L	8R	2	18	50	23.0	17.9	-5.1	2500
3	7L	7R	1	18	27	17.9	15.4	-2.5	1350
4	6L	6R	1	18	29	15.4	12.9	-2.5	1450
5	5L	5R	2	14	62	12.9	9.0	-3.9	3100
6	2L	2R	1	14	37	9.0	7.1	-1.9	1850
7	2L	2R	0	14	0	7.1	0.0	-7.1	0

Conditioner:
 Type In or Select One

 TransferType:
 Type In or Select One

- Forward
- Reverse
- Combined
- Buff



Item	3L-7L:18L-18R	8L-12L:18L-18R	13L-17L:18L-18R	18L-18R:17R-13R	18L-18R:12R-8R	18L-18R:7R-3R
Description	Outside Track:Middle	Middle Track:Middle	Inside Track:Middle	Middle:Inside Track	Middle:Middle Track	Middle:Outside Track
Track Zone Ratio	3.13	1.04	1	1	1.03	3.13

