

ABT #4



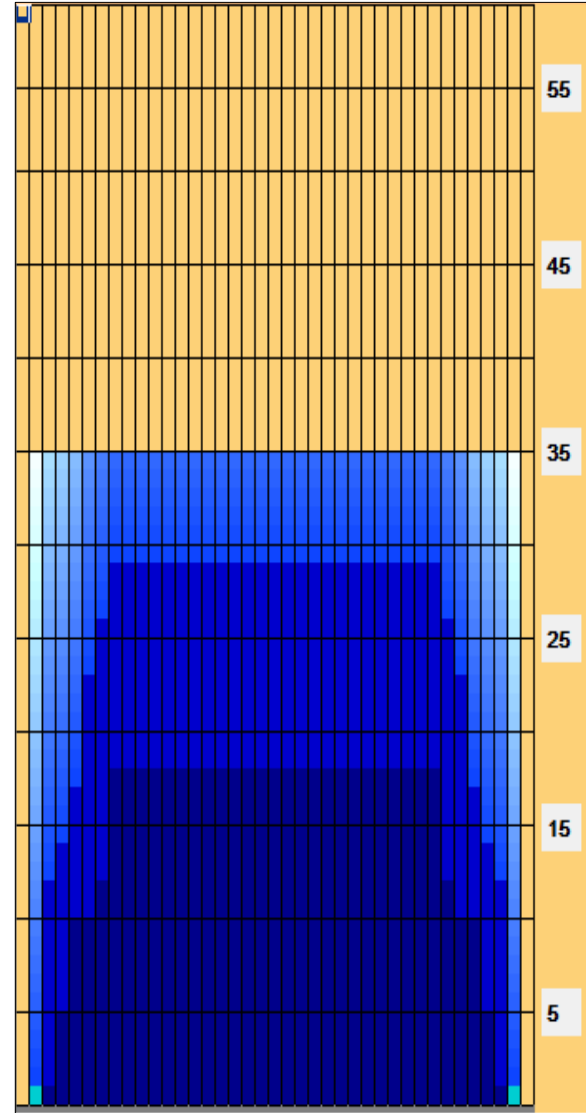
Oil Pattern Distance: 35 Feet **Reverse Brush Drop:** 35 Feet **Oil Per Board:** 50 uL
Forward Oil Total: 13.95 mL **Reverse Oil Total:** 10.45 mL **Volume Oil Total:** 24.4 mL
Forward Boards Crossed: 279 Boards **Reverse Boards Crossed:** 209 Boards **Total Boards Crossed:** 488 Boards

| | Start | Stop | Loads | Speed | Crossed | Start | End | Feet | T.Oil |
|---|-------|------|-------|-------|---------|-------|------|------|-------|
| 1 | 2L | 2R | 2 | 10 | 74 | 0.0 | 1.4 | 1.4 | 3700 |
| 2 | 4L | 4R | 2 | 14 | 66 | 1.4 | 5.3 | 3.9 | 3300 |
| 3 | 5L | 5R | 2 | 18 | 62 | 5.3 | 10.4 | 5.1 | 3100 |
| 4 | 7L | 7R | 1 | 18 | 27 | 10.4 | 12.9 | 2.5 | 1350 |
| 5 | 8L | 8R | 2 | 18 | 50 | 12.9 | 18.0 | 5.1 | 2500 |
| 6 | 2L | 2R | 0 | 22 | 0 | 18.0 | 35.0 | 17.0 | 0 |

| | Start | Stop | Loads | Speed | Crossed | Start | End | Feet | T.Oil |
|---|-------|------|-------|-------|---------|-------|------|------|-------|
| 1 | 2L | 2R | 0 | 30 | 0 | 35.0 | 29.0 | -6.0 | 0 |
| 2 | 8L | 8R | 1 | 22 | 25 | 29.0 | 25.9 | -3.1 | 1250 |
| 3 | 7L | 7R | 1 | 22 | 27 | 25.9 | 22.8 | -3.1 | 1350 |
| 4 | 6L | 6R | 2 | 22 | 58 | 22.8 | 16.6 | -6.2 | 2900 |
| 5 | 5L | 5R | 1 | 18 | 31 | 16.6 | 14.1 | -2.5 | 1550 |
| 6 | 4L | 4R | 1 | 18 | 33 | 14.1 | 11.6 | -2.5 | 1650 |
| 7 | 3L | 3R | 1 | 18 | 35 | 11.6 | 9.1 | -2.5 | 1750 |
| 8 | 2L | 2R | 0 | 18 | 0 | 9.1 | 0.0 | -9.1 | 0 |

Conditioner:
 Type In or Select One
 TransferType:
 Type In or Select One

- Forward
- Reverse
- Combined
- Buff



| Item | 3L-7L:18L-18R | 8L-12L:18L-18R | 13L-17L:18L-18R | 18L-18R:17R-13R | 18L-18R:12R-8R | 18L-18R:7R-3R |
|------------------|----------------------|---------------------|---------------------|---------------------|---------------------|----------------------|
| Description | Outside Track:Middle | Middle Track:Middle | Inside Track:Middle | Middle:Inside Track | Middle:Middle Track | Middle:Outside Track |
| Track Zone Ratio | 1.9 | 1 | 1 | 1 | 1 | 1.9 |

