

Great Wall Of China



Oil Pattern Distance: 48 Feet **Reverse Brush Drop:** 48 Feet **Oil Per Board:** 50 uL
Forward Oil Total: 16.1 mL **Reverse Oil Total:** 9.2 mL **Volume Oil Total:** 25.3 mL
Forward Boards Crossed: 322 Boards **Reverse Boards Crossed:** 184 Boards **Total Boards Crossed:** 506 Boards

	Start	Stop	Loads	Speed	Crossed	Start	End	Feet	T.Oil
1	2L	2R	4	18	148	0.0	7.6	7.6	7400
2	10L	10R	1	18	21	7.6	10.1	2.5	1050
3	11L	11R	3	18	57	10.1	17.7	7.6	2850
4	12L	12R	3	18	51	17.7	25.3	7.6	2550
5	13L	13R	3	22	45	25.3	34.6	9.3	2250
6	2L	2R	0	22	0	34.6	48.0	13.4	0

	Start	Stop	Loads	Speed	Crossed	Start	End	Feet	T.Oil
1	2L	2R	0	30	0	48.0	39.0	-9.0	0
2	13L	13R	2	22	30	39.0	32.8	-6.2	1500
3	12L	12R	2	22	34	32.8	26.6	-6.2	1700
4	11L	11R	3	22	57	26.6	17.3	-9.3	2850
5	10L	10R	2	18	42	17.3	12.2	-5.1	2100
6	10L	10R	1	14	21	12.2	10.3	-1.9	1050
7	2L	2R	0	14	0	10.3	0.0	-10.3	0

Conditioner:
 Type In or Select One

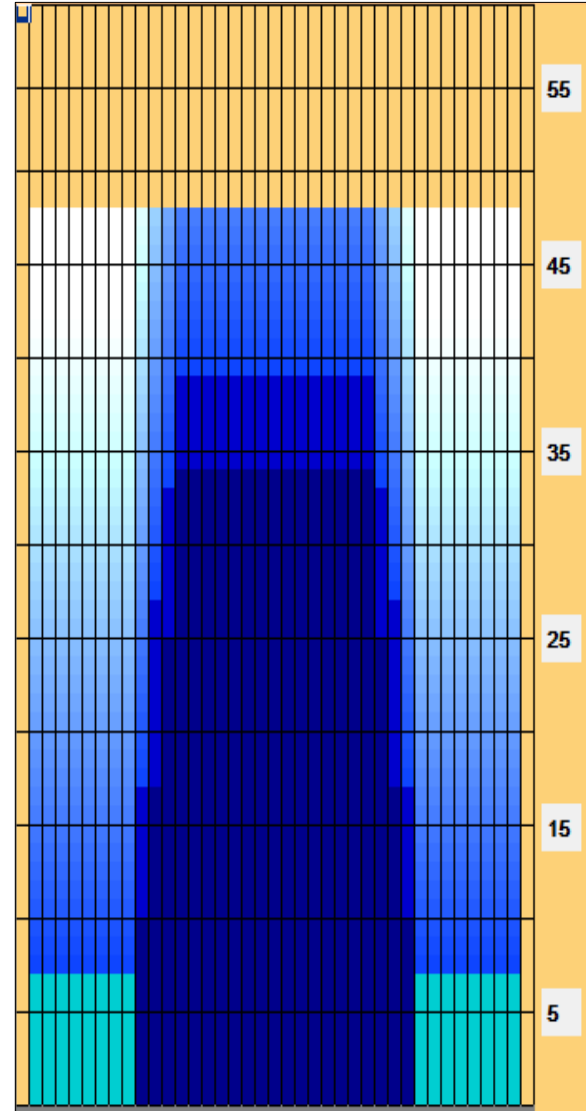
 TransferType:
 Type In or Select One

Forward

 Reverse

 Combined

 Buff



Item	3L-7L:18L-18R	8L-12L:18L-18R	13L-17L:18L-18R	18L-18R:17R-13R	18L-18R:12R-8R	18L-18R:7R-3R
Description	Outside Track:Middle	Middle Track:Middle	Inside Track:Middle	Middle:Inside Track	Middle:Middle Track	Middle:Outside Track
Track Zone Ratio	6	2.45	1	1	2.45	6

