



Prater ESBC 2010_trojice

Oil Per Board: **40 uL** Oil Pattern Distance: **40 Feet** Volume Oil Total: **18.64 mL** Total Boards Crossed: **466 Boards**

Forward Oil Total: **12.08 mL** Reverse Oil Total: **6.56 mL**
 Forward Boards Crossed: **302 Boards** Reverse Boards Crossed: **164 Boards**

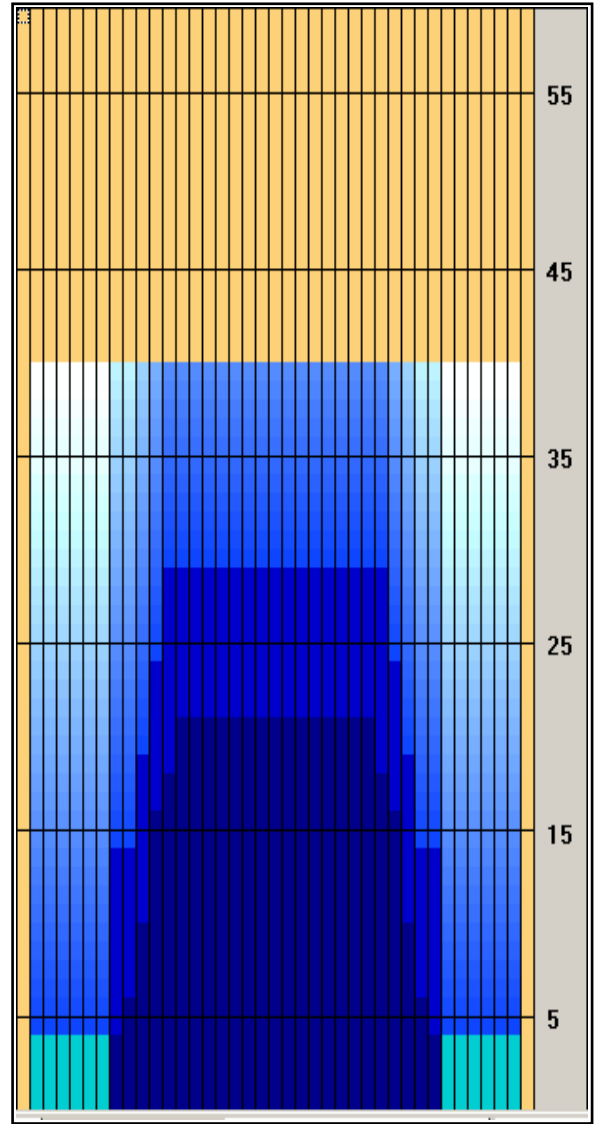
	Start	Stop	Loads	Speed	Crossed	Start	End	Feet	T.Oil
1	2L	2R	4	10	148	0.0	4.2	4.2	5,920
2	9L	9R	1	14	23	4.2	6.1	1.9	920
3	10L	10R	2	14	42	6.1	10.0	3.9	1680
4	11L	11R	3	14	57	10.0	15.9	5.9	2280
5	12L	12R	1	18	17	15.9	18.4	2.5	680
6	13L	13R	1	18	15	18.4	20.9	2.5	600
7	2L	2R	0	30	0	20.9	40.0	19.1	0

Navigation: Forward Reverse More Info

	Start	Stop	Loads	Speed	Crossed	Start	End	Feet	T.Oil
1	2L	2R	0	30	0	40.0	28.0	-12.0	0
2	12L	12R	2	18	34	28.0	22.9	-5.1	1360
3	11L	11R	2	18	38	22.9	17.8	-5.1	1520
4	10L	10R	2	18	42	17.8	12.7	-5.1	1680
5	8L	8R	1	18	25	12.7	10.2	-2.5	1000
6	8L	8R	1	14	25	10.2	8.3	-1.9	1000
7	2L	2R	0	14	0	8.3	0.0	-8.3	0

Navigation: Forward Reverse More Info

Forward Oil
 Reverse Oil
 Combined Oil
 Buff Area



Arrow Zone Ratios

Item	2-5L:16L-20	6-10L:16:-20	11-15L:16L-20	16L-20:20-16R	16L-20:20-16R	20-16R:15-11R	20-16R:10-6R	20-16R:5-2R
ul Arrow	160	256	760	800	800	760	256	160
Zone Ratio	5	3.13	1.05	1	1	1.05	3.13	5

Track Zone Ratios

Item	3L-7L:18L-18R	8L-12L:18L-18R	13L-17L:18L-18R	18L-18R:17R-13R	18L-18R:12R-8R	18L-18R:7R-3R
Description	Outside Track:Middle	Middle Track:Middle	Inside Track:Middle	Middle: Inside Track	Middle:Middle Track	Middle:Outside Track
Track Zone Ratio	5	1.69	1	1	1.69	5

