

S - Sphinx



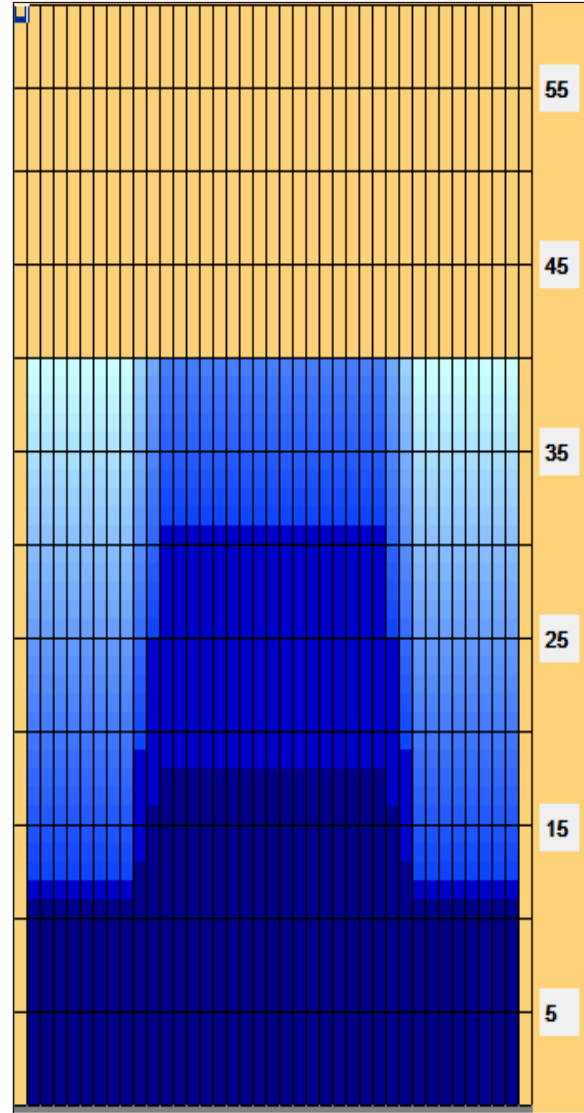
Oil Pattern Distance: 40 Feet **Reverse Brush Drop:** 40 Feet **Oil Per Board:** 50 uL
Forward Oil Total: 15.8 mL **Reverse Oil Total:** 9.4 mL **Volume Oil Total:** 25.2 mL
Forward Boards Crossed: 316 Boards **Reverse Boards Crossed:** 188 Boards **Total Boards Crossed:** 504 Boards

	Start	Stop	Loads	Speed	Crossed	Start	End	Feet	T.Oil
1	2L	2R	7	14	259	0.0	11.9	11.9	12950
2	10L	10R	1	14	21	11.9	13.8	1.9	1050
3	11L	11R	1	18	19	13.8	16.3	2.5	950
4	12L	12R	1	18	17	16.3	18.8	2.5	850
5	2L	2R	0	18	0	18.8	40.0	21.2	0

	Start	Stop	Loads	Speed	Crossed	Start	End	Feet	T.Oil
1	2L	2R	0	30	0	40.0	31.0	-9.0	0
2	12L	12R	2	22	34	31.0	24.8	-6.2	1700
3	11L	11R	2	22	38	24.8	18.6	-6.2	1900
4	10L	10R	2	22	42	18.6	12.4	-6.2	2100
5	2L	2R	2	14	74	12.4	8.5	-3.9	3700
6	2L	2R	0	14	0	8.5	0.0	-8.5	0

Conditioner:
 Type In or Select One
 TransferType:
 Type In or Select One

- Forward
- Reverse
- Combined
- Buff



Item	3L-7L:18L-18R	8L-12L:18L-18R	13L-17L:18L-18R	18L-18R:17R-13R	18L-18R:12R-8R	18L-18R:7R-3R
Description	Outside Track:Middle	Middle Track:Middle	Inside Track:Middle	Middle: Inside Track	Middle:Middle Track	Middle:Outside Track
Track Zone Ratio	2	1.43	1	1	1.43	2

