

Finále Seniorskej BwL 2019/2020



Oil Per Board: **40 uL** Oil Pattern Distance: **39 Feet** Volume Oil Total: **20.72 mL** Total Boards Crossed: **518 Boards**
 Forward Oil Total: **12 mL** Reverse Oil Total: **8.72 mL**
 Forward Boards Crossed: **300 Boards** Reverse Boards Crossed: **218 Boards**

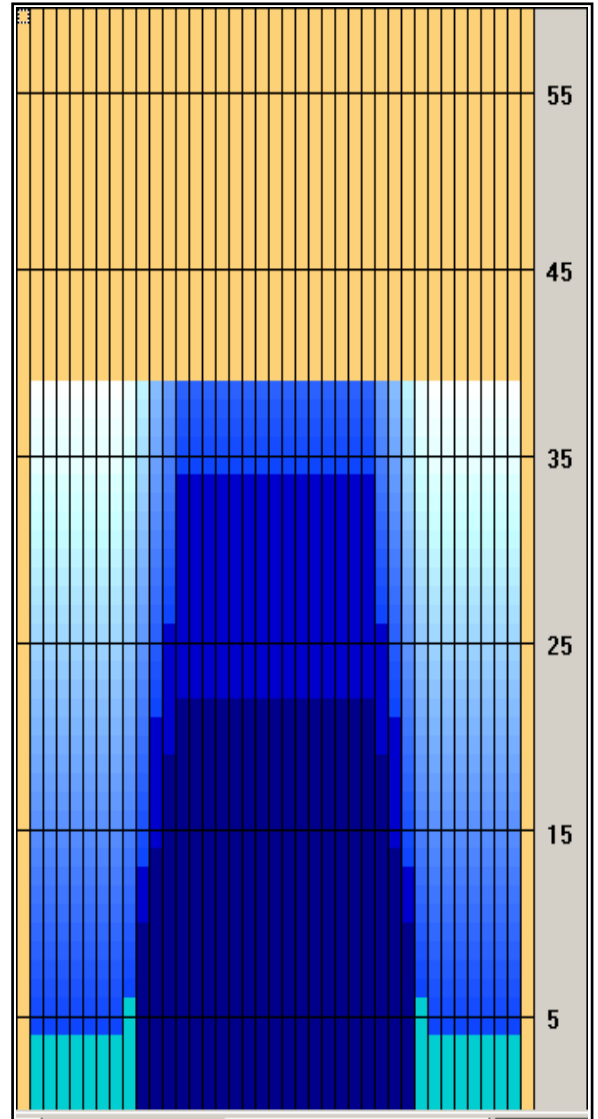
	Start	Stop	Loads	Speed	Crossed	Start	End	Feet	T.Oil
1	2L	2R	4	10	148	0.0	4.2	4.2	5,920
2	9L	9R	1	14	23	4.2	6.1	1.9	920
3	10L	10R	2	14	42	6.1	10.0	3.9	1680
4	11L	11R	2	14	38	10.0	13.9	3.9	1520
5	12L	12R	2	18	34	13.9	19.0	5.1	1360
6	13L	13R	1	18	15	19.0	21.5	2.5	600
7	2L	2R	0	26	0	21.5	39.0	17.5	0

Navigation: Forward Reverse More Info

	Start	Stop	Loads	Speed	Crossed	Start	End	Feet	T.Oil
1	2L	2R	0	26	0	39.0	33.0	-6.0	0
2	13L	13R	3	18	45	33.0	25.4	-7.6	1800
3	12L	12R	2	18	34	25.4	20.3	-5.1	1360
4	11L	11R	4	14	76	20.3	12.4	-7.9	3040
5	10L	10R	3	14	63	12.4	6.5	-5.9	2520
6	2L	2R	0	14	0	6.5	0.0	-6.5	0

Navigation: Forward Reverse More Info

Forward Oil
 Reverse Oil
 Combined Oil
 Buff Area



Arrow Zone Ratios

Item	2-5L:16L-20	6-10L:16:-20	11-15L:16L-20	16L-20:20-16R	16L-20:20-16R	20-16R:15-11R	20-16R:10-6R	20-16R:5-2R
ul Arrow	160	216	864	960	960	864	216	160
Zone Ratio	6	4.44	1.11	1	1	1.11	4.44	6

Track Zone Ratios

Item	3L-7L:18L-18R	8L-12L:18L-18R	13L-17L:18L-18R	18L-18R:17R-13R	18L-18R:12R-8R	18L-18R:7R-3R
Description	Outside Track:Middle	Middle Track:Middle	Inside Track:Middle	Middle: Inside Track	Middle:Middle Track	Middle:Outside Track
Track Zone Ratio	6	2.18	1	1	2.18	6

